

## START HERE QUICK START - HARDWARE & SOFTWARE SETUP

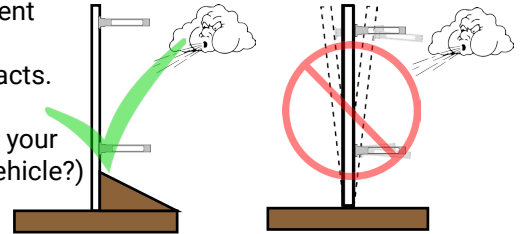
If you don't find it here, download the SOLO manual at [www.SilverMountainTargets.com](http://www.SilverMountainTargets.com)

**WARNING: Do NOT attach batteries to the SOLO devices without first attaching antennas**

### 1 TARGET FRAME

A solid frame is the key to repeatable accuracy. You can mount the target equipment on an existing frame, or build a new one.

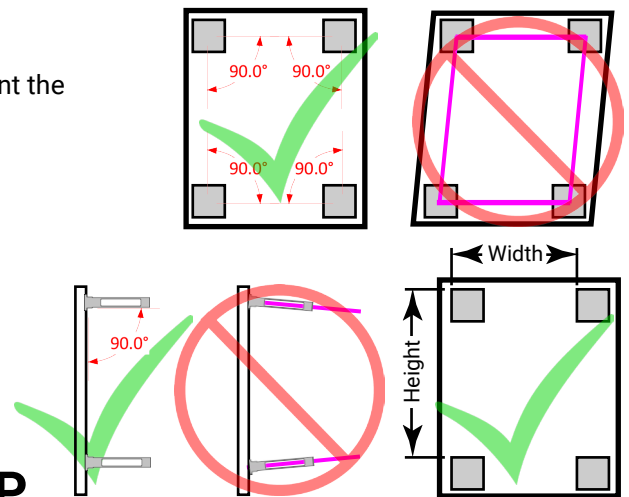
1. Your frame should be solid, and not move excessively with wind or bullet impacts. It should be mounted securely, or have a rigid stand if it's portable.
2. It should be large enough so sensors don't get shot and you can easily mount your largest targets, yet small enough to fit your portability needs (will it fit in my vehicle?)
3. Cardboard or corrugated plastic (more weather resistant) work well for a backer board. Coroplast is available at most home improvement stores.
4. If you are building a frame from scratch, visit [www.SilverMountainTargets.com](http://www.SilverMountainTargets.com) for some sample plans.



### 2 SENSORS

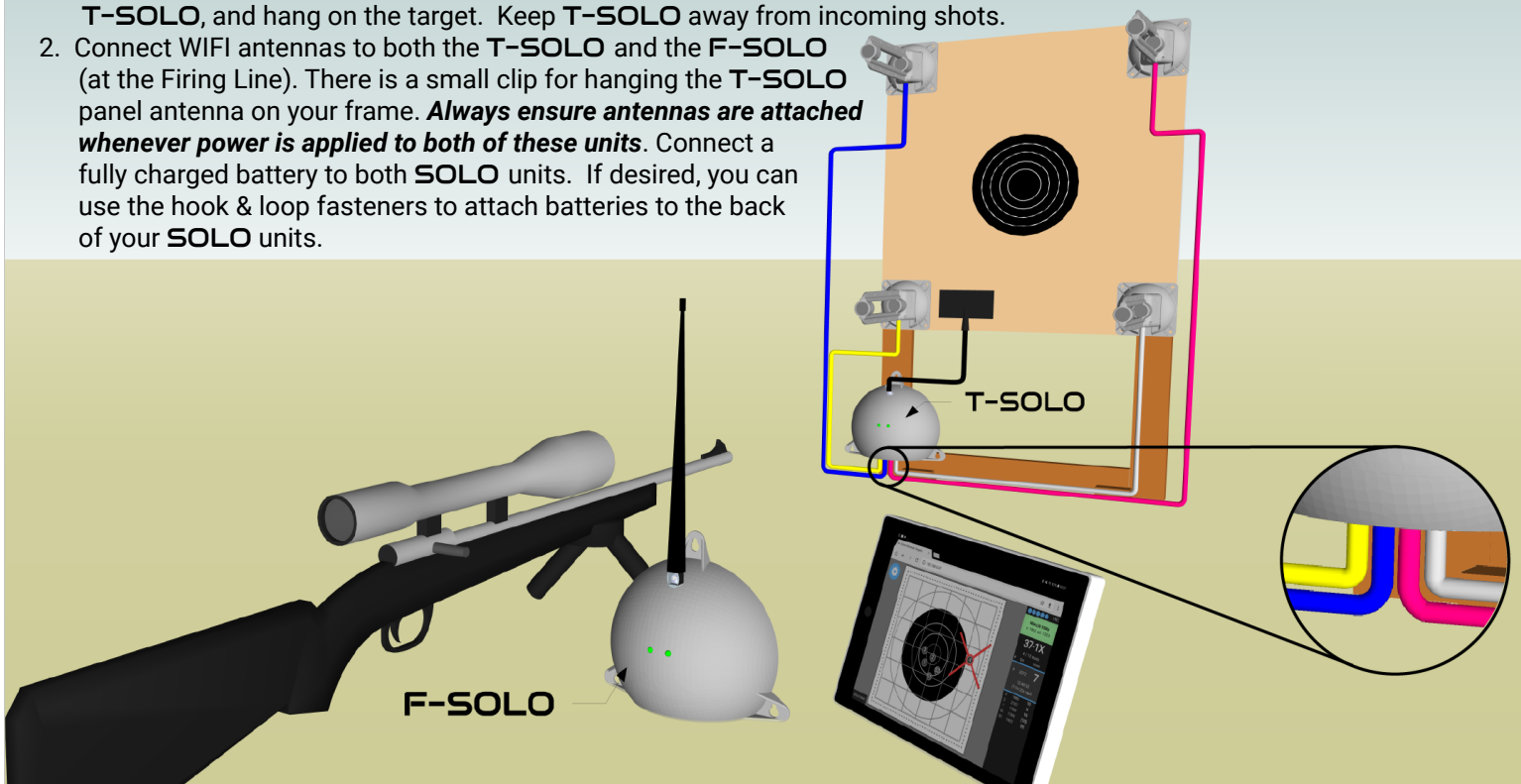
Good, accurate sensor mounting is the key to an accurate system. Mount the 4 sensor mounting bases on your target frame:

1. Mounting bases should be in a rectangular or square orientation.
2. They should be mounted in the same plane as each other and the target face.
3. Sensors should point at the firing line, & be parallel to each other.
4. Once mounted, record the horizontal spacing between the left edges of upper bases & the vertical spacing between the tops of the left bases.
5. Fasten a target face to the frame, roughly near the center of the bases.



### 3 COMPLETE THE SYSTEM SETUP

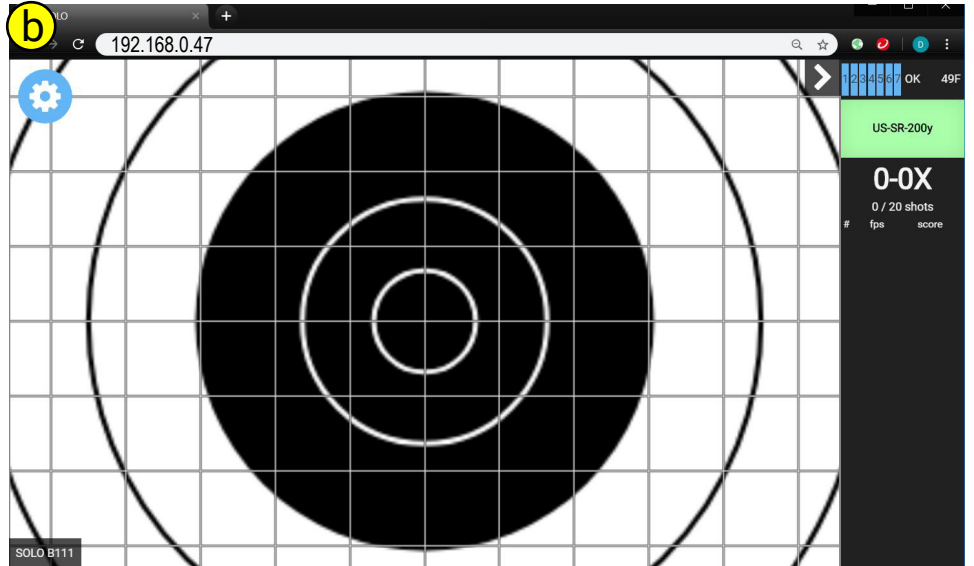
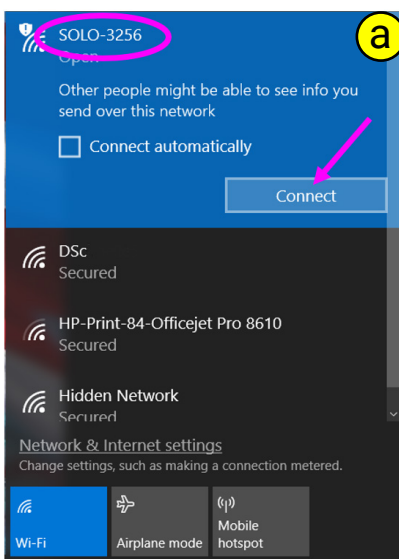
1. Connect color coded cables from the T-SOLO (at the Target) to each sensor. **CABLE COLORS MUST BE ORIENTED AS SHOWN.** Place sensors in the mounting bases with cables coming out the bottom. Connect WIFI panel antenna to T-SOLO, and hang on the target. Keep T-SOLO away from incoming shots.
2. Connect WIFI antennas to both the T-SOLO and the F-SOLO (at the Firing Line). There is a small clip for hanging the T-SOLO panel antenna on your frame. **Always ensure antennas are attached whenever power is applied to both of these units.** Connect a fully charged battery to both SOLO units. If desired, you can use the hook & loop fasteners to attach batteries to the back of your SOLO units.



## 4 CONNECT A DISPLAY DEVICE

Almost any display device with WIFI capability and a modern browser (laptop, tablet, smartphone, etc.), may be used to connect to the target system.

- Connect to WIFI Network - Choose "Settings", then "WIFI" or "Connections". Look for a WIFI network named SOLO-XXXX, where XXXX is the serial number written on your unit, and click "connect"
- Open a browser (Safari, Chrome, Firefox, etc.) & in the Address bar, type in the IP address of the target **192.168.0.47**. The TargetViewer should now load



## 5 SOFTWARE SETUP

### OPEN MAIN MENU

The Main menu or "Gear" icon contains the Back, Options, Save, & Tools buttons.

### SET OPTIONS

The Options menu looks like an "Eye".

- Select the "+" next to Options and set various fields as desired. Recommended settings are shown.
- Set Sights and Shots on Score
- Select appropriate target face to match your paper target.

### OPEN TOOLS MENU

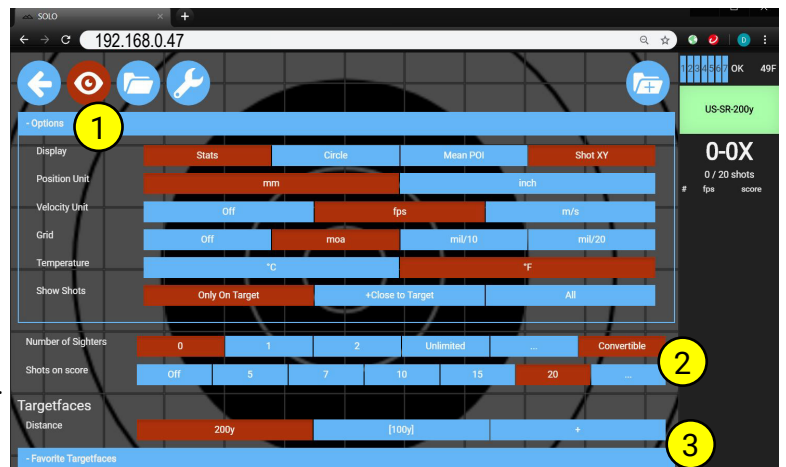
The Tools Menu (wrench) is where you enter major settings.

- Sensor Spacing**-Enter width & height of sensor spacing taken earlier in this guide.
- Calibration**-Aligns the acoustic center of the target frame to the actual center of the paper target face. With at least one shot on the target, select "Calibration", click and hold on the target face and drag it to a position so the bullet holes in the target correspond to the display.
- Regularly save your data using "Save/Restore" data button
- Set other features as desired

### RETURN TO MAIN MENU

## 6 NOW GO SHOOT!

You are now ready to shoot your first shots! For additional information, refer to the User's Manual at [www.SilverMountainTargets.com](http://www.SilverMountainTargets.com)



# 7 THE FINER POINTS

## BASICS

1. Shot details are displayed on the right side of the screen, in the ShotsList column
2. The last shot fired retains the red ring and X around the impact.
3. Click a second time on a shot for options such as Strike from Record, Go for Record, Insert a Miss, etc.
  - a. Insert-A-Miss and Strike-From-Record are used most often for dealing with a crossfire. The person crossfiring gets a Miss added to his string, and the person receiving the crossfire gets it struck from his record.
  - b. Convert Sighters allows the shooter to fire any number of sighters, then select the point from which all shots prior to that are converted to sighters.

## SAVING STRINGS

4. The save icon (folder with a + sign) will save the current string with an optional name, or allow you to discard the string.

## RECALL A SAVED STRING

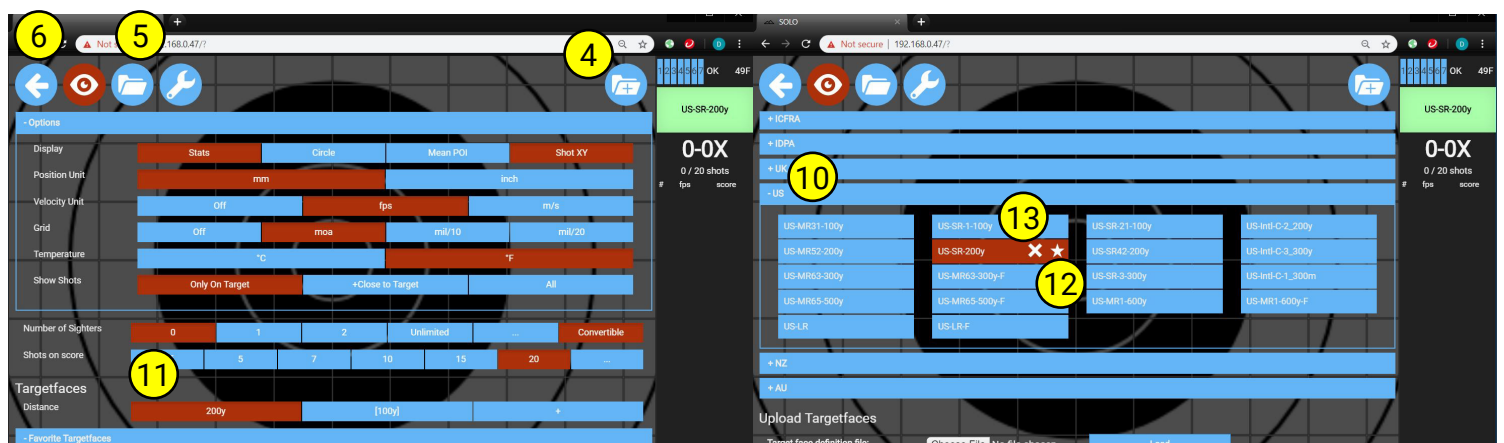
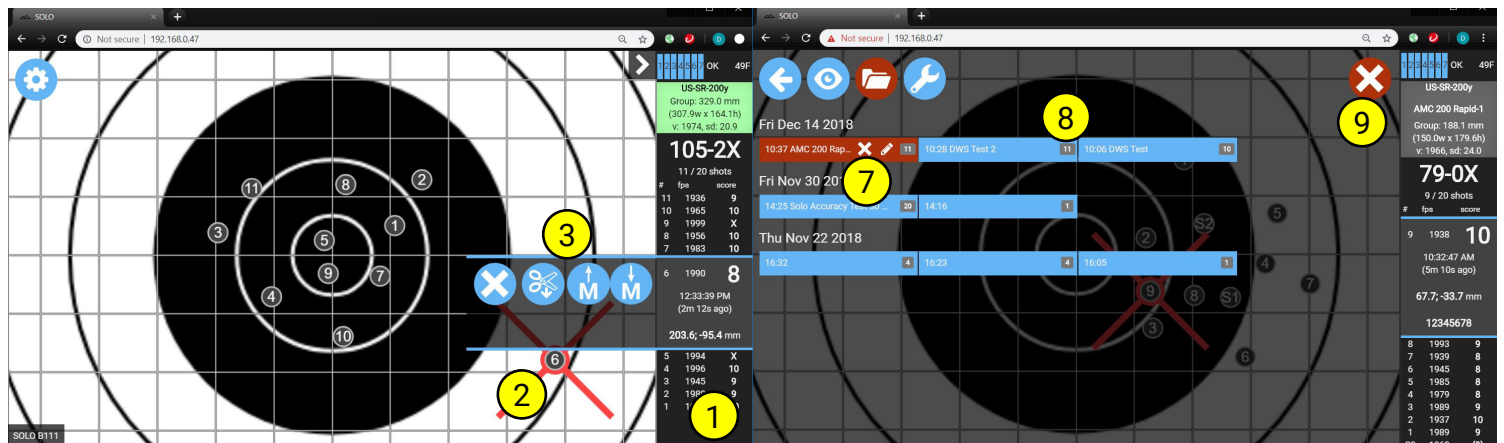
5. Recall a string from the Storage menu (folder icon)
6. When a saved string is recalled, click the back arrow to remove the menu and allow you to view, expand, select individual shots, or manipulate the string
7. Saved strings can be renamed or deleted by selecting them and clicking on the pencil or X.
8. There is a small number with each saved string that represents the number of shots contained in that string. Selecting this small number will bring up an export icon (down arrow icon) to export the string specifics to a .csv report. Multiple strings can be selected to export to a single report.
9. To remove a recalled string from the screen, select the red X in the upper right corner

## TARGET FACES

10. Select the appropriate target face to match your paper target. Target faces are stored in expandable categories near the bottom of the Options menu.
11. When a target is selected, it will default to the designed yardage distance for that target. However, you can select a different yardage distance, which will adjust the on-screen grid for that distance.
12. Optionally, move a target face to Favorites by selecting the target, and clicking on the "star".
13. Delete a target face with the "X". NOTE, this will also delete all strings that used that face.

## SAVE BACKUPS AND UPDATE FIRMWARE

14. Regular backups of data are important to capture sensor spacings, calibration data, saved strings, and other user options. Data backups are different than report exports, and are done from the Tools menu "Backup/Restore Data".
15. Firmware updates to F-Solo are done on the Tools menu, and the update selection will display your current F-Solo firmware and T-Solo firmware and hardware.





**SOLO** a new generation  
of electronic target

**SOLO is specifically designed to be simple and easy to use for the everyday shooter. However, sometimes things don't go as expected. Here are some solutions to common problems.**

### GENERAL

1. Make sure you have entered sensor spacings using the same unit of measure (mm or inches) as chosen in Options.
2. If you can't find Options such as units of measure, temperature units, grid units, etc., make sure you expand the collapsed menu selection by clicking the "+" next to "Options".
3. Are batteries charged and connected? Be careful connecting and disconnecting the battery cables. The connectors are small and you can damage the cable if you pull on the wires.
4. Both SOLO units should have the left green light on, and the right green light either on or blinking
5. An asterisk (\*) by a shot value means SOLO has detected something suspicious about that shot. It could be a sensor didn't record the shot, an extreme incoming angle for the shot, or extreme velocity at the target. If a sensor is not working, you'll notice a red triangle in one corner of the display, with either "front" or "rear", indicating exactly which sensor element did not record the shot. This could be due to a sensor fault, but is most likely a bad cable or cable connection. Check to ensure your cable or sensor has not been hit by an incoming shot. To test a sensor element, see "Tap Test" below

### WiFi CONNECTIVITY

1. Relative signal strength of the WiFi signal is represented by signal strength bars. There is no hard and fast rule for the number of bars you should see at any given target line, but as a guideline, 200 yards should be 6 or 7, 300 yards 5 or 6, 600 yards 3-4, and 1000 yards 1-3 bars.
2. Are your antennas connected well? The panel antenna at the target should be above grade, with clear line of sight to the firing line, and have the logo facing the firing line. The Omni-directional antenna at the firing line should be oriented vertically, and be placed up off the ground, preferably on a table, bench, scope stand, or shooting cart.
3. Can you connect to the SOLO-xxxx network?
  - a. If you can connect to the network, can you then connect to the target viewer screen by entering IP address 192.168.0.47 in your browser?
  - b. If you can't connect, check antennas and batteries, and try connecting with a different device.
  - c. If problems persist, try powering both **SOLO** units down and back up.
4. Once connected to the target viewer screen, is the box in the upper right corner red or green?
  - a. Green means you're connected and everything is working correctly
  - b. Red with empty signal bars means you are connected from your display device to your F-SOLO, but F-SOLO is not communicating to the T-SOLO at the target. Refreshing your browser should work.
  - c. Red with empty and blinking bars mean you are not connected from your display device to F-SOLO. In most cases this is because you may be associated with the wrong network or no network at all. Try reconnecting.

### WiFi SIGNAL HEALTH

Signal health is displayed next to the signal strength bars. "OK" means things are working well. "Slow" means responses from the target are slower than expected. "Lost" means there were lost packets within the past 2 minutes. At system startup, you'll see a counter count up to 100 as it runs the initial signal diagnostics. Once the counter gets to 100, "OK" should display.

### SENSORS

A "Tap Test" can be performed to test each sensor element. With your fingernail, make TWO light, direct, careful taps in quick succession (within ½ second) on the silver sensor can of any microphone. Observe appearance of a green triangle in one of the four corners of your display screen. This green triangle will either say "Front" or "Rear" indicating which mic was tapped. Repeat this procedure for each other mic in the system.



**Silver Mountain Targets USA**  
**3393 S. Keller Rd.**  
**Crawfordsville, IN 47933**  
**USA**

[www.SilverMountainTargetsUSA.com](http://www.SilverMountainTargetsUSA.com)



**Silver Mountain Targets, Inc.**  
**691 Tripp Settlement Rd.**  
**Keswick Ridge, NB E6L1X3**  
**Canada**

[www.SilverMountainTargets.com](http://www.SilverMountainTargets.com)